

## **Fiat Marea Poly Elliptical Headlight Conversion (UPDATED 23/02/07)**

Your first step is to buy a pair of Fiat Marea Poly Elliptical Headlights which can be found on all Fiat Marea ELX and HLX's of any age.



Your second step is to make sure that you are also given the sidelight connector with part of the wiring loom; it isn't entirely necessary to obtain this but it does make it a lot easier to install and look factory fit. Make sure you have enough of the wiring loom as possible as you will be wiring them into the Bravo's wiring loom. (Approx 30cm).



*If you are unable to obtain the sidelight connector shown above, then you can buy it relatively cheap from <http://www.vehicle-wiring-products.co.uk> found under connector blocks part number 192147.*

You can extend the wire using good quality speaker wire, so don't worry if it's too short. The rest of the headlight connectors on the Bravo will fit directly into the new Marea Headlights. (These are the Indicator connector, Dipped/Main Light Connector).

## Bravo Headlight Removal

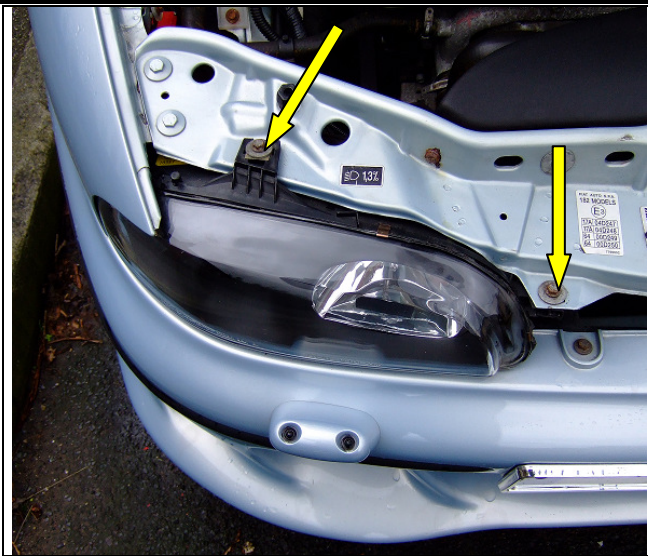
### Pre-Removal

If you have bought used headlights, theoretically they will already be aligned for you. Therefore if you want to save yourself time and money by not having your lights realigned then mark off the position of the brackets and bolts in their current position before removal. If possible mark the headlight pattern on a garage door or wall.

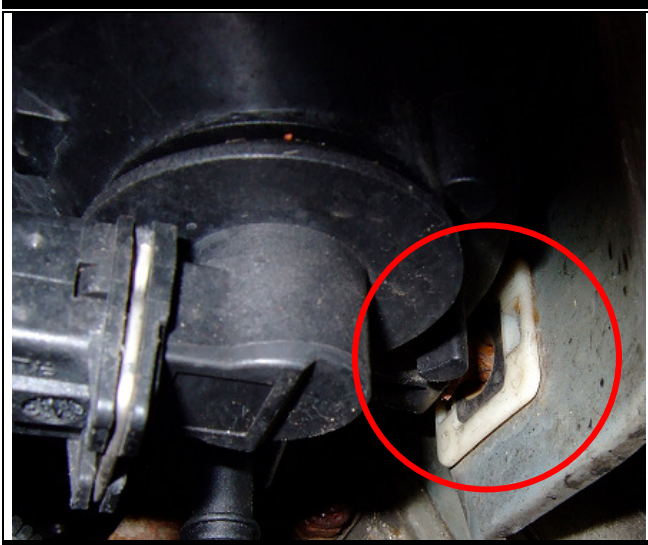
I would still recommend you get them aligned properly just to be on the safe side as well as make sure you don't lose valuable light. Approx £12.

### Step 1.

Unscrew the two mounting nuts on top of the headlight, shown by the two yellow arrows.

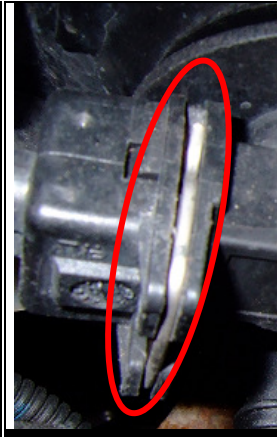


At the rear of the headlight near the indicator connector, the headlight will still be held in place by a ball socket connected to the wing so be careful not to break it, use silicon spray or WD40 to lubricate the joint then just a firm sideways tug should disconnect it.



## Step2.

The connectors on the rear of the Bravo headlights have metal spring clips around them, these need to be removed on each connector in order to remove the connectors successfully from the headlight without damage to the Headlight unit.



## Step3.

Once you've disconnected your connectors, three in total (Indicator, Dipped/Main and Height Adjustment Motor connectors), you will then be able to remove the headlights from the car completely.

*Repeat steps 1 to 3 for the other headlight. Once the headlights have been removed, take care in removing the motor off the Bravo headlight. It requires twisting and maybe a possible tilt back to remove. Caution there is a spring inside. See Step2.*

## Fiat Marea Sidelight Connector & Fiat Bravo Wiring Loom

### Step 1.

Assuming you have the sidelight connector with at least 30cm of wire to work with, you will need to unravel part of the cars main wiring loom, it is hidden behind a black plastic shroud running along the side of the engine bay. (Dotted Red Line). If unsure it's the wires coming from the biggest connector of the three connectors (the one for dipped/main lights) under the headlight motor.



**\*\*\*IMPORTANT\*\*\***

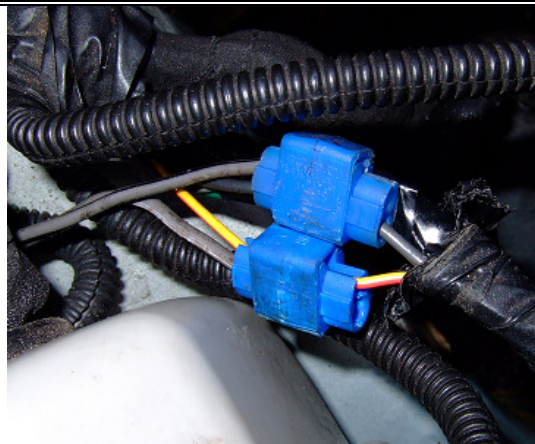
### Wiring Colour Code Chart

		Fiat Bravo/a MK1 (96-98)	Fiat Bravo/a MK2 (99-01)
Drivers Side Headlight	+VE	<b>YELLOW/RED</b>	<b>YELLOW/RED</b>
	- VE	<b>BLACK</b>	<b>BLACK</b>
Passenger Side Headlight	+VE	<b>GREY/BLACK</b>	<b>YELLOW/BLACK</b>
	- VE	<b>BLACK</b>	<b>BLACK</b>

**NB. Passenger Side Headlight.** Remember change over year was 98/99 therefore examine your vehicles wiring to confirm which wiring you should follow. I.e. If you have a 98 model but don't have a GREY/BLACK wire then obviously use the YELLOW/BLACK or vice-versa.

### Step2. Wiring Drivers Side Sidelight Connector

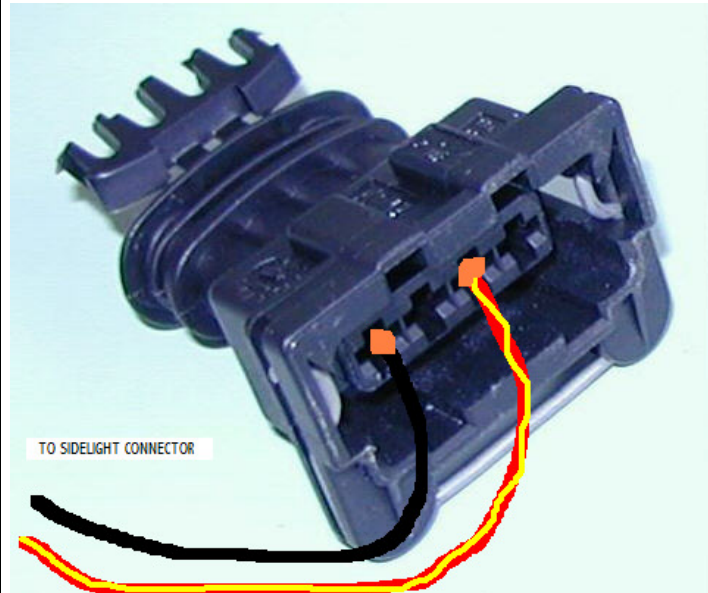
Open the plastic shroud and locate the yellow/red wire for the (+ve) and the black wire for the (-ve). With the sidelight connector in hand, use one wire from the sidelight connector and attach it to the (+ve) yellow/red wire using blue snap on connectors. Repeat for the other remaining wire attaching it to the black wire.



**NB.** If you prefer to be minimalistic then you can connect one of the wires from the sidelight connect to the yellow/red wire and the other can be directly attached to the chassis of the vehicle via an accessible screw. This would be your negative (earth).

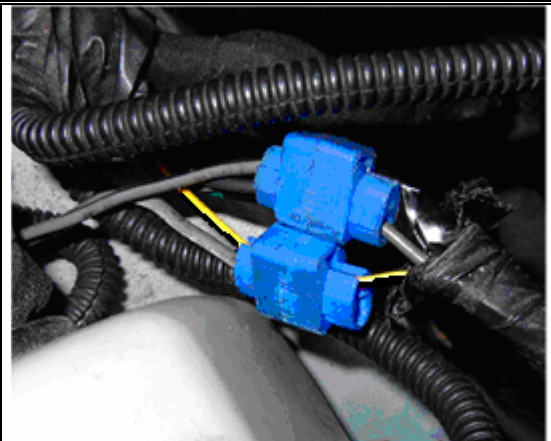
**OR**

If you prefer **NOT** to cut any of the existing wiring loom, then clarify which wire goes to which point on the main wiring loom connector then as soon as you get to the stage of refitting your Marea Headlights, push one wire from the sidelight connector into the (-ve) terminal in the connector block and the other wire into the sidelight (+ve) terminal using a small screw driver then clip the connector onto the headlamp.



**Step2. Wiring Passenger Side Sidelight Connector**

Open the plastic shroud and locate the appropriate wire for the (+ve) using the chart on the previous page and the black wire for the (-ve). With the sidelight connector in hand, use one wire from the sidelight connector and attach it to the (+ve) wire using blue snap on connectors. Repeat for the other remaining wire attaching it to the black wire.



#### Step 4.

Once you've done both sides of your car, test that your connection is good and solid. You can use a tester and make sure there is a current when you switch your sidelights on or visually check that the bulb is lit. Once everything works correctly, tape up all your wires with insulation tape, which makes look tidy and prevents the possibility of water/moisture getting inside.



## Setting up your Fiat Marea Headlights

### Step 1.

Fit all your bulbs into place in your new Marea Headlights, checking that none of them have blown, including sidelights and indicators. It is much easier doing it now rather than later once fitted.

**(Ignore Step 2 if your Marea Lights already have headlamp motors attached)**

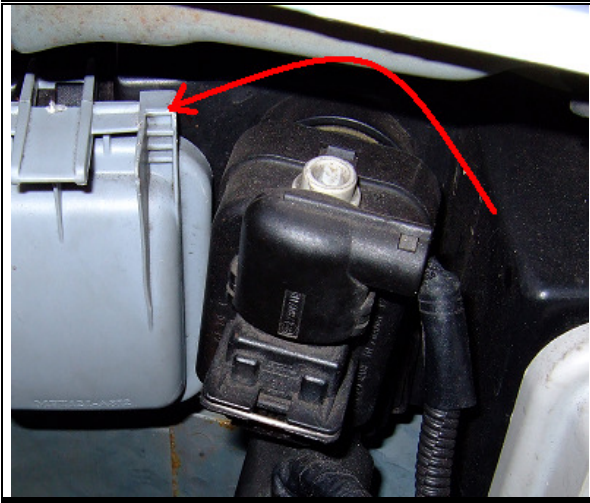
### Step 2a.

Connecting your headlight motors to your new Marea Headlights can be very difficult when the lights are fitted to the car, therefore its best to do the following steps now.

### Step 2b.

To remove the headlamp motor from the Bravo Headlamp, remove the grey cover for the main beam and twist the headlamp motor anti clockwise and tilt it up slightly upon removal.

Be careful as there is a spring inside. Don't loose it as you can't get a replacement from Fiat.



### Step 2c.

With the Marea Headlight you will need to reattach the motor removed from the Bravo Headlight. Above the main connector on the Marea light you'll see a small 10p sized hole, with a white circular connector inside. Using pliers, pinch one of the spines and pull on it gently till it starts to rise and doesn't go any further, this makes the inner workings of the lights tilt up.

### Step 2d.

You must prevent the white circular connector to move so the best option is to remove the grey covers that protect the bulbs and put your finger inside the area where you put the dipped light bulb in and wedge it in so that any pressure put on the white connector will not create the lights to tilt within the unit.



### Step 2e.

This is where you'll need to attach the motor. The yellow prong sticking out of the motor needs to be placed into the white connector on the headlamp, it needs to be slid in from the top at a 45 degree angle and then twisted on. Don't forget to put the spring back over the yellow prong sticking out off your headlight motor. To find out whether its connected properly gently try to push the internal workings of the light with your finger, if it moves back down then its not connected and you need to try again.



*Repeat Step 2 for the other headlight.*

## Fitting your Marea Headlights

### **Step 1.**

Carefully place your new Marea headlight back into your car, reconnect the connectors, but **DONT** put the metal spring clips back on the connectors just yet, try your lights first and make sure they are working correctly including the light leveller on the dash.

### **Step 2.**

Once all is good, put the metal spring clips back on all the connectors, before you screw the lights back in, use the extra space to connect all your connectors to your new Marea Headlights. Remember at the beginning of this guide if you marked off the brackets from your existing bravo headlights re-align your Marea Lights to the same position.

### **Step 3.**

Slot the light back into the ball socket and screw the two screws back in.

That is it. All you need to do now is visit your local garage to set up the light beams correctly for your new Marea Headlights. Costs roughly £12 inc VAT

